

NEW DEVELOPMENT ALREADY PROVING A BIG HIT

ONE of Washington's newest developments is pulling in visitors as it finally nears completion.

The former Jennings dealership at Albany has undergone a huge overhaul, with the arrival of a new Greggs, Toolstation, Frank's (flooring) and Angling Direct.

These will soon be joined by a Fastned EV charging point, which was nearing completion as Washington Way went to press.

The town's latest Greggs

is already proving to be a winner, with a steady stream of customers – many even opting to sit in to enjoy a spot of lunch

The new development, pictured below, opened for business shortly after news broke that the adjacent Co-op petrol station will soon be rebranded.

Following a summer sell-off of nearly 130 of Co-op's petrol stations across the UK, the garage will soon be operated by supermarket giant Asda.



FLOWER POWER

RESIDENTS in Fatfield are looking forward to a colourful spring after local youngsters planted hundreds of new bulbs.

Children from Fatfield Academy planted daffodil bulbs around their local community thanks to support from Fatfield Residents Association.

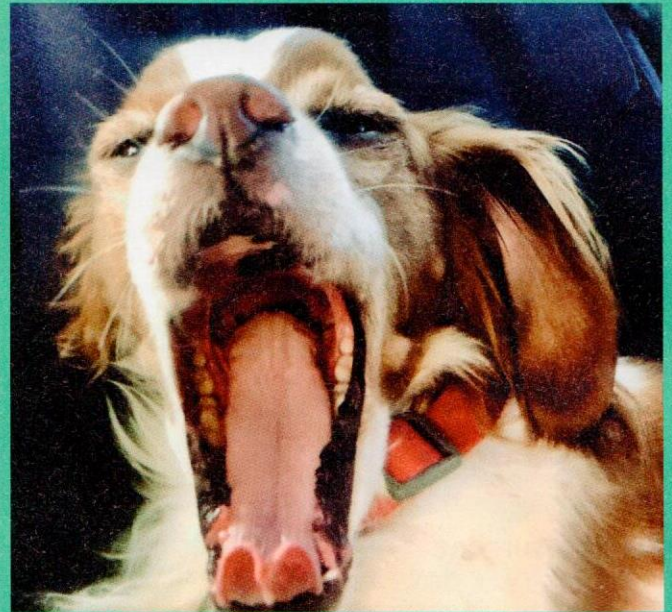
Along with members of the Association as well as

Shepherd Way Allotment Society, the youngsters enjoyed some quality outdoor time as they planted the bulbs, with extra support in the form of a City Council grant and permission to plant courtesy of Gentoo.

It proved to be a great day out for the children, who are now looking forward to seeing the hundreds of new flowers in March.

PAWS FOR THOUGHT

BAD BREATH? TAKE IT SERIOUSLY!



Periodontal disease starts with plaque accumulation over the teeth, which can cause gingivitis (inflammation of the gums), bacterial infection and potentially loss of teeth.

Some of the signs of Dental Disease include:

- Bad breath
- Problems eating some food,
- Pain during drinking,
- Drooling
- Rubbing the mouth with the paws or on the carpet
- Losing weight

The accumulation of bacteria on the teeth can also lead to secondary health concerns, including gastrointestinal problems, endocarditis (infection of the heart) and jaw fracture.

If your vet finds signs of periodontal disease they

may recommend a general anaesthetic to allow for a full mouth examination, scale and polish and mouth X-rays.

If the teeth are significantly affected, the vet may recommend extractions.

The best way to prevent bacterial plaque accumulation and dental disease is with daily tooth brushing.

Starting this routine when they are young will help ensure they are comfortable with the process as they get older.

Not sure if your pet has a healthy mouth? Visit us and ask your vet about examining their teeth and get an individual plan according to the need of your furry friend. It's not about a beautiful smile, it's about health.

HOW TO CONTACT US

5-9 Spout Lane
Washington Village
Tyne and Wear
NE38 7HN
P: 0191 4163427
E: washington@sheriffshighwayvets.co.uk



SPONSORED ARTICLE